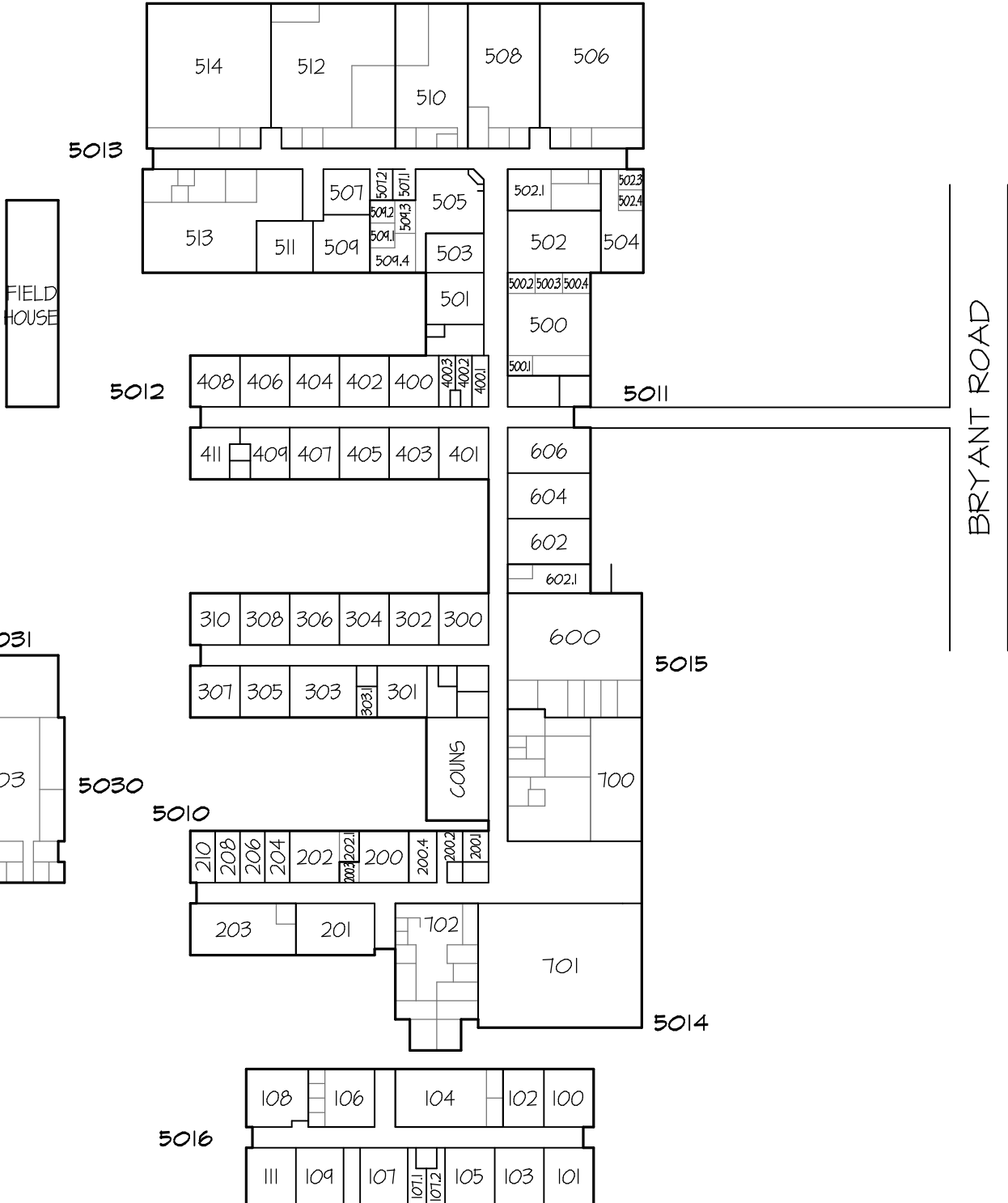


WALTON COUNTY #747

4050-MONROE AREA
 COMPREHENSIVE HIGH SCHOOL
 BRYANT ROAD
 MONROE, GA

PARCEL NUMBER - 1140
 ACREAGE - 23.5

GREEN HOUSE 5050



5-YEAR PLAN FOR
 MONROE AREA HIGH SCHOOL
 WALTON COUNTY BOARD OF EDUCATION
 WALTON COUNTY, GEORGIA

Sy RICHARDS, ARCHITECT, INC.

ATLANTA ● GEORGIA

BUILDING PLAN
 WALTON COUNTY #747
 DATE: March 6, 2000